

# FOILBOARD® INSULATION SYSTEMS

# INSTALLATION GUIDE

To achieve maximum thermal performance and to ensure fast and simple installation of Foilboard® GREEN rigid insulation panel to concrete or brick wall systems, Foilboard Australia recommends the following method.

## What do you need?



Foilboard® Green or Silver Joining tape



Foilboard® Spacer Blocks (Optional)

## How to Install?



Foilboard GREEN rigid insulation panel should be installed to the concrete tilt panel after installing the furring channel clips to the wall

**STEP 1**



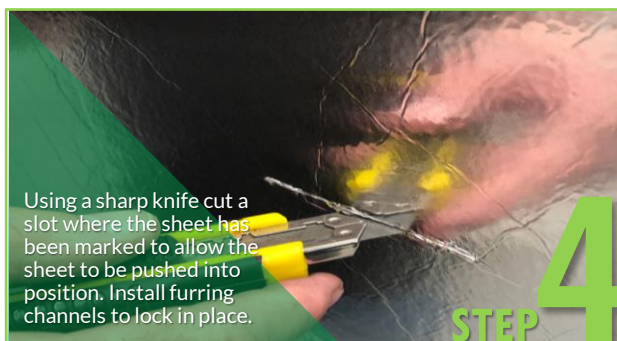
Mark the measurements out on the Foilboard GREEN rigid insulation panel, Using the gridlines (registered design) as a guide. Using a straight edge and a sharp blade/knife. cut the rigid panel to size

**STEP 2**



Position the insulation panel and gently push into position. This mark all the clips on the back of the Foilboard.

**STEP 3**



Using a sharp knife cut a slot where the sheet has been marked to allow the sheet to be pushed into position. Install furring channels to lock in place.

**STEP 4**



Tape all penetrations, joints and gaps using Foilboard GREEN tape, to minimise hot/cold air transfer. Use spacer blocks in improve thermal performance (inset)

**STEP 5**

**TOP TIPS**

- ✓ Foilboard® can be installed with spacer blocks to achieve greater insulation performance by creating a second reflective airspace.
- ✓ Start from the top of the build and work down and with area that can use full sheets. This can save unnecessary cuts
- ✓ The Foilboard® GREEN antiglare is there to protect you. Both the antiglare and silver foil reflect heat.



COMMERCIAL CONCRETE OR BRICK WALL



*It's the smarter way to insulate*

INFORMATION HOTLINE: 1800 354 717  
www.foilboard.com.au