

# GENERAL INSTALLATION GUIDE

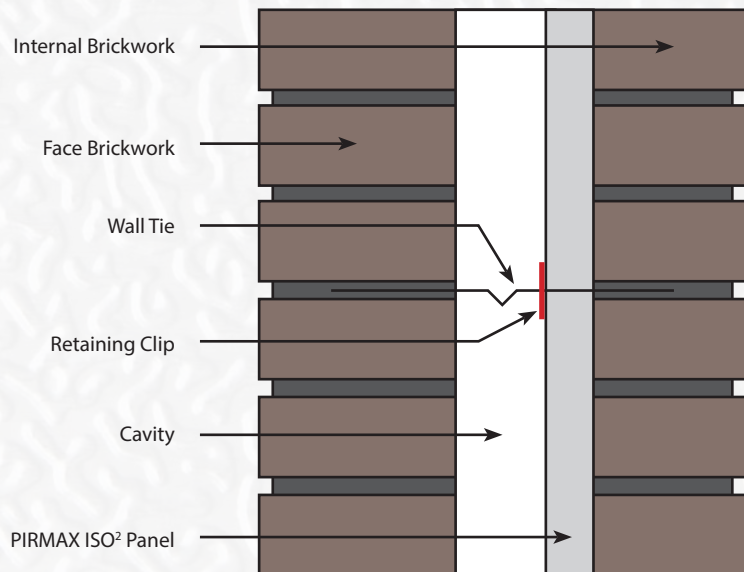
## Double Brick Cavity Installation

### DOUBLE BRICK CAVITY INSTALLATION

1. Construct and prepare the inner leaf of brickwork to allow the installation of the PIRMAX ISO<sup>2</sup> Panel by removing excess mortar and mortar droppings. Ensure the wall ties are kept clean of mortar and are placed at recommended centres.
2. Secure the PIRMAX ISO<sup>2</sup> Panel tight against the external side of the inner leaf using the wall ties and approved retaining clips.
3. Ensure the minimum required residual cavity is maintained in accordance with the NCC/BCA provision.



Double Brick Cavity Wall Side Elevation



Distributed by:

**reflex**  
INSULATION

Reflex Insulation Pty Ltd  
Phone: **1300 720 185**  
Email: **info@reflexinsulation.com.au**  
**www.reflexinsulation.com.au**

AUSTRALIAN OWNED, AUSTRALIAN MANUFACTURED. Manufactured by: PIRMAX Pty Ltd 9/170 Boundary Road, Braeside VIC 3195 T: 03 9587 0955 E: info@pirmax.com.au ©Reflex Insulation Pty Ltd. All Rights Reserved. Disclaimer: The installer/user of these products will need to determine if the product is suitable for the use in the intended application. Information in this document is believed to be correct at the time of publication. Reflex Insulation Pty Ltd take no responsibility for the misinterpretation, misuse and misrepresentation of information provided in this document. Reflex Insulation Pty Ltd reserves the right to change the content of this publication without any notice.

Issued April 2020 • Version 1.0



# GENERAL INSTALLATION GUIDE

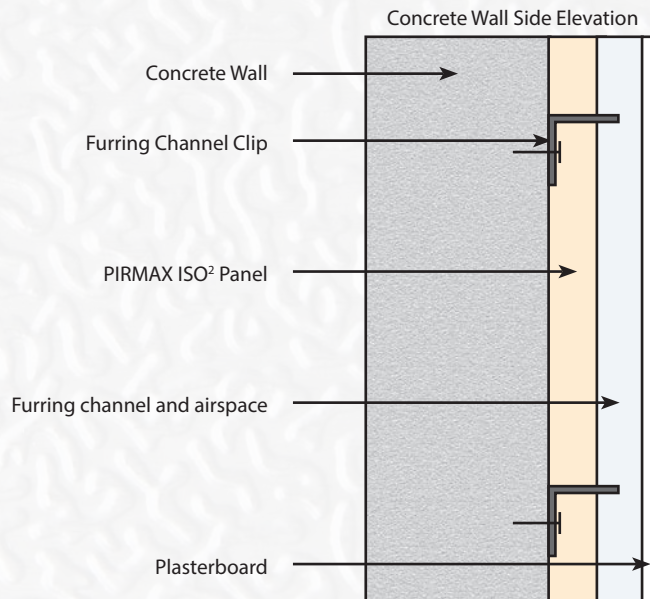
## Concrete Wall Installation

### CONCRETE WALL INSTALLATION

1. Fix the selected clips for the furring channel, at spacings required for the plasterboard.
2. Install the PIRMAX ISO<sup>2</sup> Panel by pushing the panel onto the clips, ensuring the wings of the clip have pushed through the panel, and the panel is butting up to the concrete wall. If required trim and neaten the foil around the clips to avoid any foil detaching from the panel.
3. Join each PIRMAX ISO<sup>2</sup> Panel side by side during the installation, butting each panel to provide continual thermal performance.
4. Furring channel must be fitted by clipping into the channel clips. The furring channel is to be fitted as closely as possible to the PIRMAX ISO<sup>2</sup> Panel.
5. Once all the above has been carefully installed, the plasterboard lining can then be fitted.

### TAPING

It is recommended the joints to be taped with a 48mm or 72 mm wide high quality aluminium foil tape. When taping, ensure the surfaces are clean, sound and free of dust and contaminates. Use a tape applicator to apply appropriate pressure to the tape.



Distributed by:

**reflex**  
INSULATION

Reflex Insulation Pty Ltd  
Phone: **1300 720 185**  
Email: **info@reflexinsulation.com.au**  
**www.reflexinsulation.com.au**

AUSTRALIAN OWNED, AUSTRALIAN MANUFACTURED. Manufactured by: PIRMAX Pty Ltd 9/170 Boundary Road, Braeside VIC 3195 T: 03 9587 0955 E: info@pirmax.com.au ©Reflex Insulation Pty Ltd. All Rights Reserved. Disclaimer: The installer/user of these products will need to determine if the product is suitable for the use in the intended application. Information in this document is believed to be correct at the time of publication. Reflex Insulation Pty Ltd take no responsibility for the misinterpretation, misuse and misrepresentation of information provided in this document. Reflex Insulation Pty Ltd reserves the right to change the content of this publication without any notice.

Issued April 2020 • Version 1.0



# GENERAL INSTALLATION GUIDE

## Within Stud Frame Installation

### STUD FRAMED WALL INSTALLATION (WITHIN STUD FRAME)

PIRMAX ISO<sup>2</sup> Panel may be installed between the studs in a stud framed wall to minimise wall thickness and provide superior thermal performance. PIRMAX ISO<sup>2</sup> Panel provides high performance insulation within a cavity, which can be combined with a reflective air space that can also be utilised as a cavity for services.

1. Before installing PIRMAX ISO<sup>2</sup> Panel, ensure the vapour barrier or vapour permeable membrane wall wrap (if required), is applied to the external face of the framing in accordance with the installation instructions.
2. Cut the PIRMAX ISO<sup>2</sup> Panel to fit tightly between all studs, noggins and top and bottom plates.
3. Install the insulation into the framing by pressing the PIRMAX ISO<sup>2</sup> Panel in until the panels touch the vapour barrier or vapour permeable membrane wall wrap. Depending on the thickness of the panel, this may create an air space to fit services into the cavity if required.
4. Ensure there are no gaps between the wall framing and the PIRMAX ISO<sup>2</sup> Panel to ensure optimal thermal performance.
5. PIRMAX ISO<sup>2</sup> Panel shall be installed so there are no gaps between segments or at abutments with other materials.
5. Once all the above has been carefully installed, the plasterboard lining can then be fitted.

### TAPING

It is recommended any penetrations or joins be taped with a 48mm or 72 mm wide high quality aluminium foil tape. When taping, ensure the surfaces are clean, sound and free of dust and contaminants. Use a tape applicator to apply appropriate pressure to the tape.

Distributed by:



Reflex Insulation Pty Ltd  
Phone: **1300 720 185**  
Email: [info@reflexinsulation.com.au](mailto:info@reflexinsulation.com.au)  
[www.reflexinsulation.com.au](http://www.reflexinsulation.com.au)

AUSTRALIAN OWNED, AUSTRALIAN MANUFACTURED. Manufactured by: PIRMAX Pty Ltd 9/170 Boundary Road, Braeside VIC 3195 T: 03 9587 0955 E: [info@pirmax.com.au](mailto:info@pirmax.com.au) ©Reflex Insulation Pty Ltd. All Rights Reserved. Disclaimer: The installer/user of these products will need to determine if the product is suitable for the use in the intended application. Information in this document is believed to be correct at the time of publication. Reflex Insulation Pty Ltd take no responsibility for the misinterpretation, misuse and misrepresentation of information provided in this document. Reflex Insulation Pty Ltd reserves the right to change the content of this publication without any notice.

Issued April 2020 • Version 1.0