

PINK® WALL AND CEILING BATTS

Application

This installation guide provides installation recommendations for Pink® Batts, Pink® Soundbreak™ and Pink® Partition insulation supplied in batt form in residential wall and ceiling applications for both new build and retrofit applications.

Important Notes

Pink® Wall and Ceiling Batts are supplied in widths to meet standard wall and ceiling frame spacing.

- All insulation shall be installed in accordance with AS 3999.
- Refer to the latest ICANZ installation handbook Part 2: Professional Installation Guide for information and tips.
- Ensure that all safety assessments are carried out relevant to the project and all site safety requirements are strictly adhered to.
- Electric cables and equipment partially or completely covered with bulk thermal insulation may overheat and fail. Refer to AS 3999:2015 – Section 2.6 for details.
- Leave a minimum side clearance of 100mm from the body of heat-emitting fixtures such as luminaries, exhaust fans and flues, unless otherwise stated by the manufacturer of the equipment.
- When installing R7.0 Ceiling Batts in a ceiling where the plasterboard has a load limit $<4\text{kg/m}^2$, it is recommended to string or tape the frame before installing the batts.
- Where cutting is required, use a sharp knife and straight edge. Do not cut insulation with power tools.
- Pink® insulation products are not designed to withstand weathering. External cladding should be applied without delay. These insulation products are not suitable for applications where subject to wetting or excessive moisture.
- Prior to installation, calculate the amount of insulation and fixings required.
- Pink® insulation products must be installed dry.
- Avoid gaps in the insulation, other than where required, around electrical fittings or as specified.
- Avoid compressing or over fixing insulation. This will reduce the thermal performance of the installed product.
- Avoid using multiple small offcuts to fill single areas. Use larger single pieces, purpose-cut to fill larger gaps.
- Check that there are no signs of seepage beneath bathroom/s floor/s (and other wet areas).
- Organise to repair damaged plumbing or sewer work before beginning insulation project.
- Ensure roof space areas are adequately ventilated. Roof spaces can become very hot, particularly in warm weather. Take breaks and drink plenty of water to get relief from the heat.
- Turn off the power at the fuse box before commencing the installation. Ensure you place a warning tag to prevent power being restored prior to completion of the install.
- Before entering the ceiling space, make a sketch of the location of any electrical equipment in the ceiling such as downlights and exhaust fans.

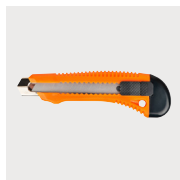
Insulation required

- Measure the square metre of area to be insulated.
- Coverage of each Pink® Batts is provided on the relevant Technical Data Sheet.
- Divide the area to be insulated by the coverage per pack to determine the number of packs to order.
- Allow for wastage. As a general rule, allow for 5% wastage for simple areas and greater allowances for more complex areas.

Accessories

- Pink® Wall and Ceiling Batts can be held in place with simple stringing such as pvc tape.
- Any stringing selected should minimise the unevenness of contact of the plasterboard against the framing.
- Generally Pink® Batts will stay in place when installed prior to wall sheeting being installed. Where partition batts are to be left exposed for extended periods stringing should be in place to hold the product in place.

Tools



Sharp knife

With a plastic (non-conductive) handle for cutting insulation to size.



Cutting board

Or hard, durable surface.



Staple gun

With non-metallic staples to staple tape or string, if required.



Tape or string

If installing from underside of ceiling or if wall insulation is to be left for an extended period.



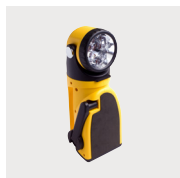
Batt poker

Of a non-conductive material such as wood or plastic, if installing from below and ceiling is not in easy reach.



Kneeling board

To span two joists if needed to install insulation within roof spaces.



Torch

For use in roof spaces.



Ladder

Or scaffolding as needed.



Tape measure

To measure lengths required.

PPE

Personal Protective Equipment (PPE) must be compliant with the requirements of the specific worksite. Check with site foreman or site representative to ensure that required PPE obligations are met. As a recommendation for handling and installing insulation materials, the following PPE is recommended:



Eye protection

Suitable eye protection to AS 1336 reduces the risk of eye contact with dust or fibres. Safety glasses must be worn when installing from beneath the ceiling.



Gloves

Gloves are recommended, especially when cutting insulation.



Work clothes

Loose fitting clothes, including long sleeved shirts, long pants and cap or hard hat.



Dust mask

A dust mask is recommended when working in dusty areas.



Safety shoes

Safety boots/shoes must be worn to protect feet.



Separate wash

Wash work clothes separately and rinse the washing machine after use.

Safety



Assess

Assess the building structure and site for any safety issues prior to commencing work.



Check

Make note of the location of equipment in the soffit such as lighting luminaires and fire sprinklers.



Electrical wires

Ensure the work area is safe from hazards including electrical cabling. Do not touch any live electrical cables.



Isolate power

If accredited, isolate power at the circuit board where necessary and apply caution tags to circuit breakers.



Electrician

If not accredited, ask appropriate site representative to isolate power at the circuit board where necessary and apply caution tags to circuit breakers.



Height

Working at height can be dangerous, exercise caution when climbing ladders or accessing elevated platforms.



Stay hydrated

Ceiling spaces can be hot and poorly ventilated. Stay hydrated and get relief and fresh air regularly.

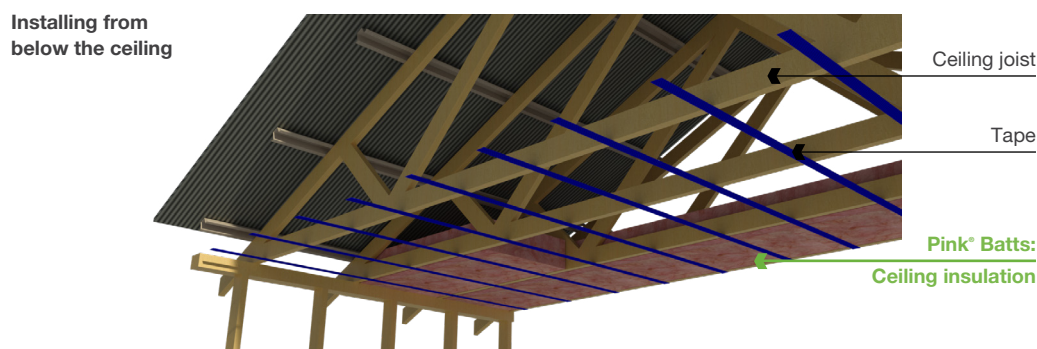
For more information call 1300 654 444
email info@insulation.com.au or web www.insulation.com.au

Fletcher
Insulation
Building Better, Together

Flat and raked ceilings: New build

Fitting Pink® Batts to ceiling joists before ceiling is installed

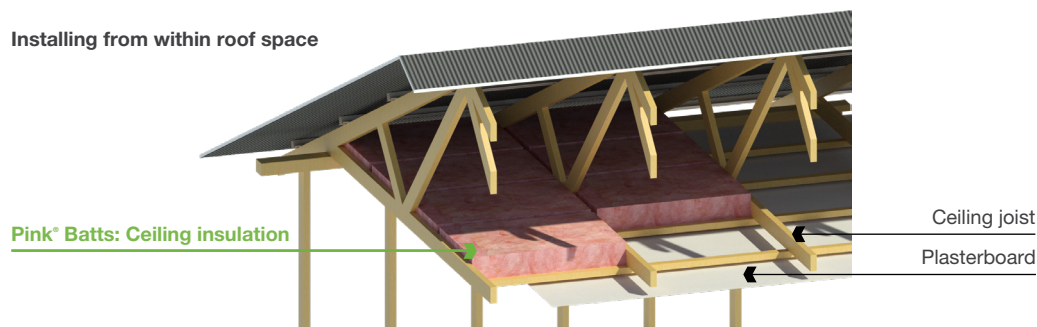
- Run tape strapping at regular intervals (3–4 straps per batt) and at 90° to the joists. Fix between joists to keep batts securely in place.
- If required, a batt poker can be used to push batts between joists.
- Friction fit the insulation, ensuring no gaps between the insulation and ceiling joists.
- It is important that the insulation is secured so it cannot fall.
- Butt the batts closely together to ensure there are no gaps left at joints.
- Continue to work until ceiling is fully insulated and butting up to the external wall frames or brickwork.
- If brickwork is single skin and exposed to water, maintain a 50mm gap from brickwork to prevent capillary action.
- Offcuts may be used to fill small spaces to ensure complete coverage. Use single offcuts rather than multiple small pieces to fill voids.
- If you have any gaps or pipe work, cut batts to fit around.
- Where a lower R-value is required due to limitations on space, it is recommended that a higher density is used to reduce R-value loss. This may require the remaining insulation be increased to compensate and shall be calculated as per the requirements of AS 3999:2015 Appendix E.



Flat ceilings: Retrofit

Fitting Pink® Batts to ceiling from within roof space

- When installing R7.0 Ceiling Batts in a ceiling where the plasterboard has a load limit $<4\text{kg/m}^2$, it is recommended to string or tape the frame before installing the batts.
- Place the insulation packs in the roof space and spread them around. Leave unopened until needed.
- Commence working from one side or from the furthest point from the man-hole access.
- Open one pack of batts at a time.
- Never walk on plaster ceilings. Stand only on ceiling joists and only after checking they are safe to stand on.
- Place the kneeling board across at least two ceiling joists before kneeling.
- Friction fit the batts between the ceiling joists.
- Butt batts closely together ensuring there are no gaps.
- Continue until the ceiling area is fully insulated and extends 50mm over the external wall top plate. Ensure a clearance of not less than 25mm between batts and roofing.
- Avoid blocking natural ventilation.
- Using the batt poker, push the batts into the areas that are difficult to access.
- Cut the batts on the cutting board.
- Offcuts may be used to fill small spaces to ensure complete coverage.
- Ensure the man-hole is completely covered with a cut-to-size batt.

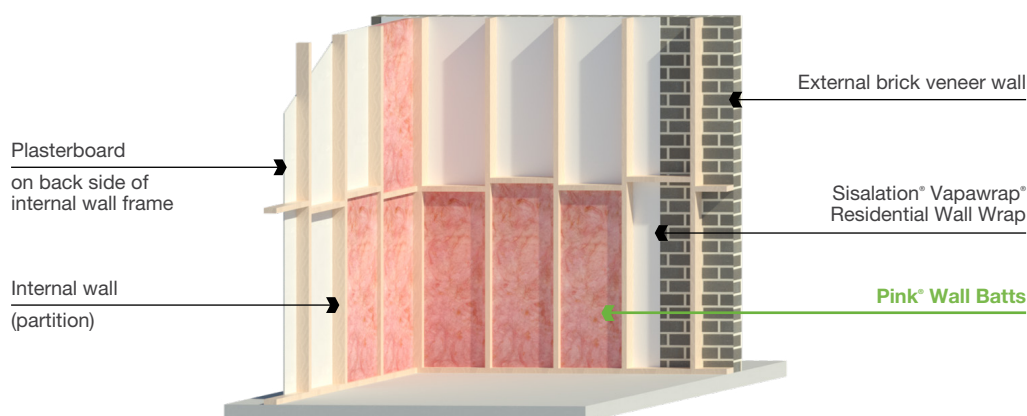


Stud framed external and internal walls

- Check the centre to centre distance between studs in the wall frame.
- Wall wrap (recommended) or long lasting string/twine should be fixed across the exterior face of the frame before installing the insulation from the inside. Where string/twine is used, twine should be fixed between each set of studs from the top to the bottom, running parallel with the studs. Where two lengths are used they should be evenly spaced.
- Friction fit the insulation into the wall frames ensuring no gaps between the insulation and studs or noggings.
- In metal framing, the insulation shall be inserted into the open side of the channel.
- Ensure that the insulation does not protrude past the studs and fits snugly, including where insulation is around water pipes or other rigid obstructions in the wall.
- Butt the insulation edges closely together to ensure there are no gaps left at joints.
- Offcuts may be used to fill small spaces to ensure complete coverage. Use single off cuts rather than multiple small pieces to fill voids.
- Where required and when insulation is to be left exposed for extended periods of time, pvc tape stringing may be used to hold product in place.

If your application/installation is outside these guidelines, please contact Fletcher Insulation prior to commencing the install to obtain written approval for your specific application.

Note: Glasswool insulation is not suitable for double brick cavity walls.



© Fletcher Insulation Pty Limited 2022. Fletcher Insulation reserves the right to change product specifications without prior notification. Information in this publication and otherwise supplied to users as to the subject product is based on our general experience and is given in good faith, but because of the many particular factors which are outside our knowledge and control and affect the use of products, no warranty is given or is to be implied with respect to either such information or the product itself, in particular the suitability of the product for any particular purpose. The purchaser should independently determine the suitability of the product for the intended application. The colour PINK, Pink® and Pink® Batts are registered trademarks of Owens Corning used under licence by Fletcher Insulation. FBS-1 Glasswool Bio-Soluble Insulation® is a registered trademark of ICANZ. Unless otherwise stated all ™ and ® are trademarks and registered trademarks of Fletcher Insulation Pty Limited ABN 72 001 175 355. IG9_Revision_2_Issue Date 28042022.

For more information call 1300 654 444
email info@insulation.com.au or web www.insulation.com.au

Fletcher
Insulation
Building Better, Together